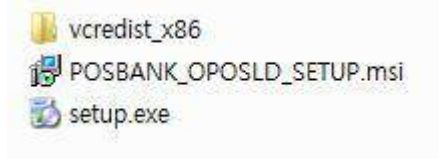


[POSBANK OPOS LD Setup]

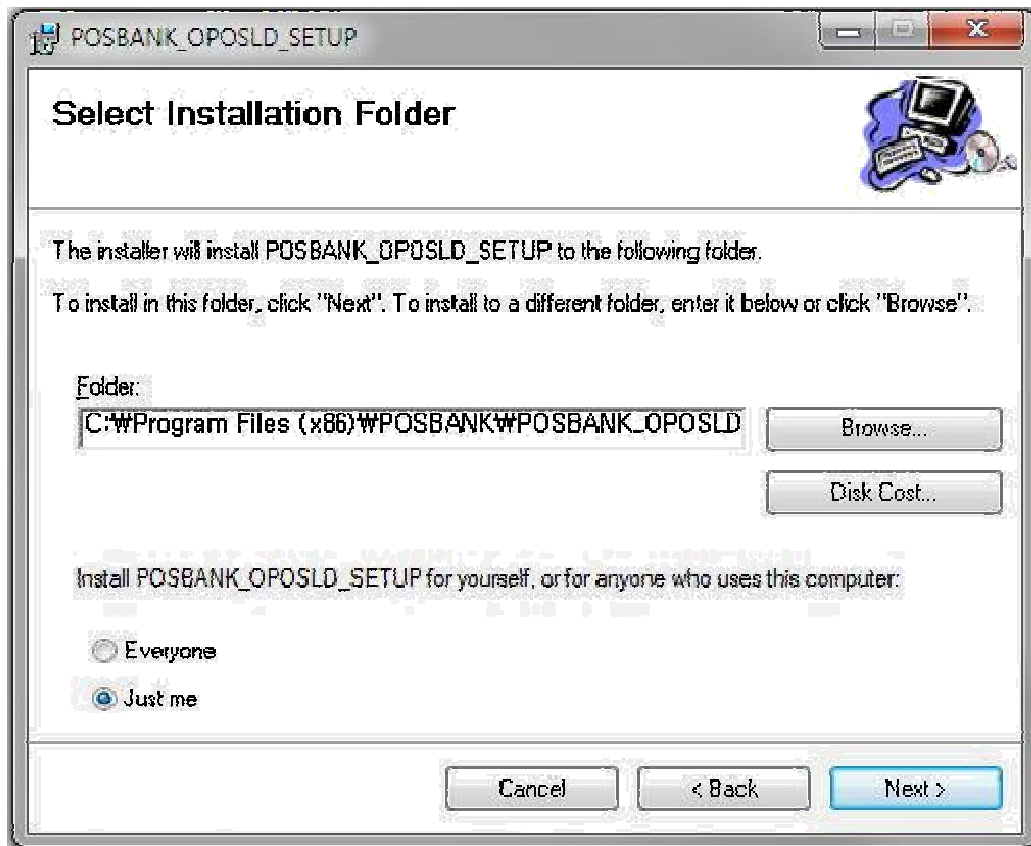
1. Please release the compressed file : POSBANK_OPOS_LD_SETUP.zip
2. You can find one folder and two setup files as below :



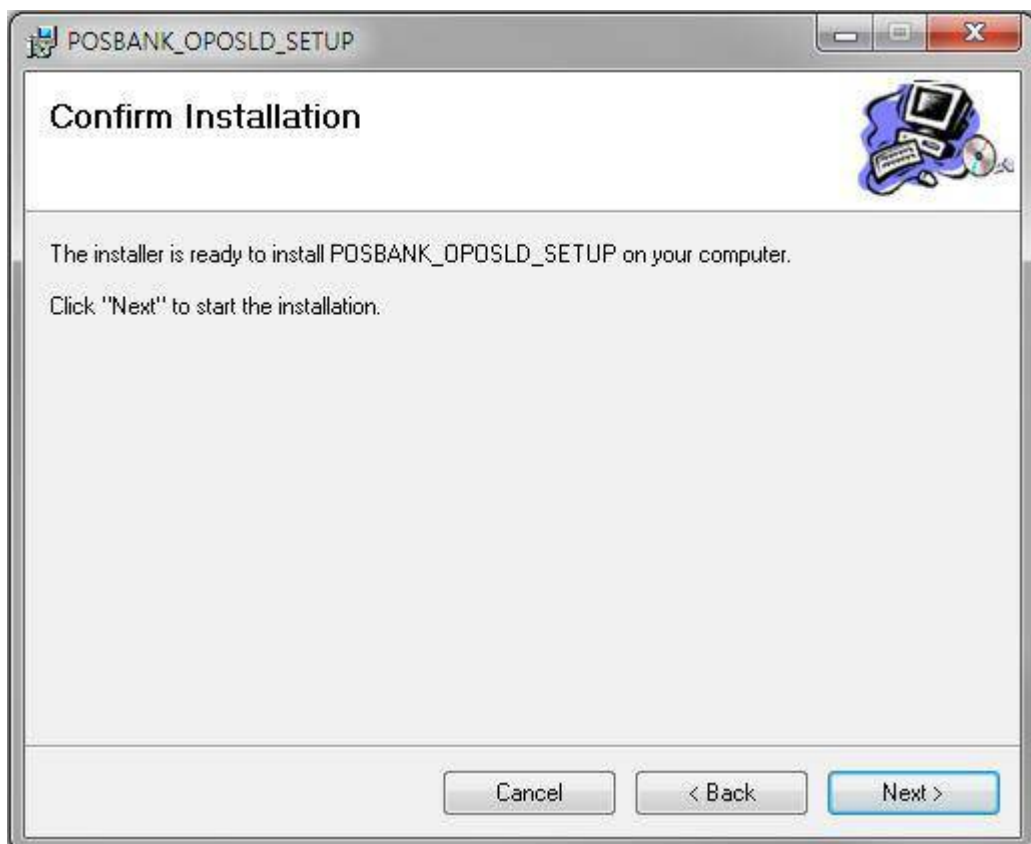
3. Please double-click the setup.exe (If the Visual C++ 2008 Redistributable already installed in your computer than you may executes POSBANK_OPOS_LD_SETUP.msi)



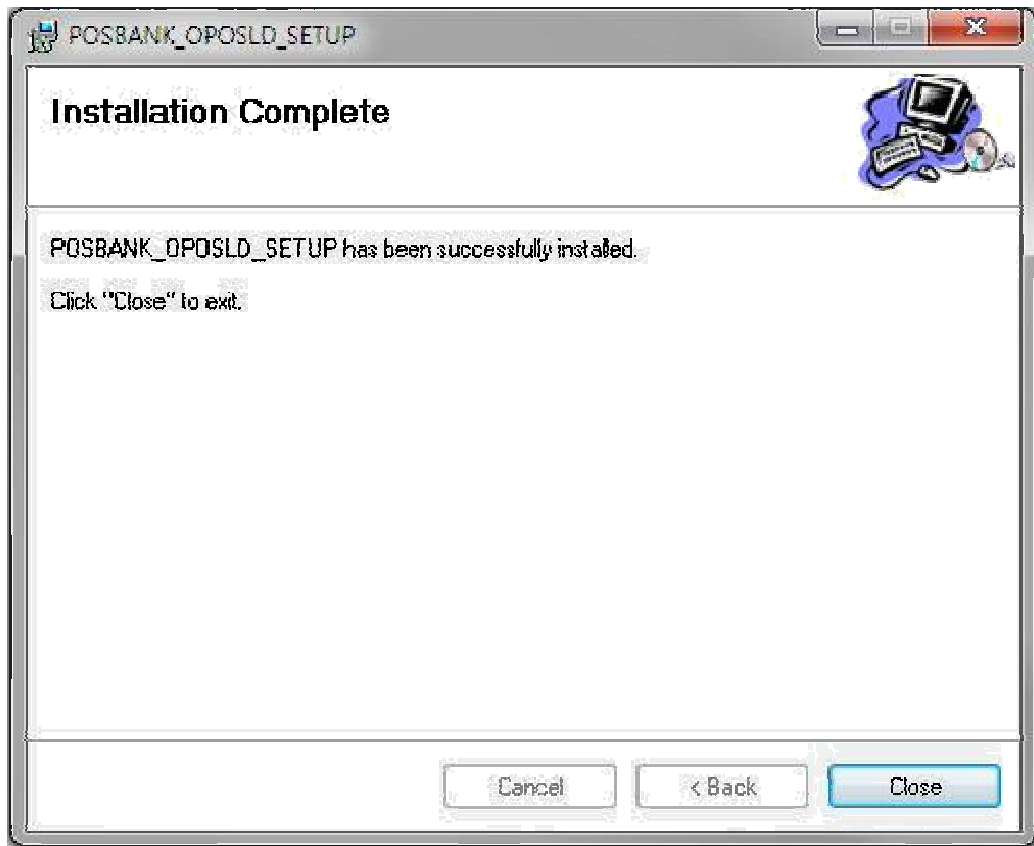
Next...



Next...



Next...

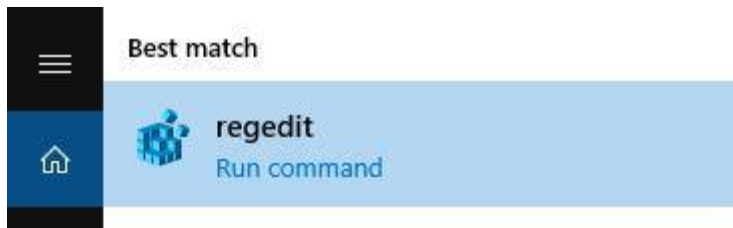


4. You can find several files at the directory C:\Program Files (x86)\POSBANK\POSBANK_OPOS_LD_SETUP as bellow :



[How to use OPOS Driver]

- 1) At first, open the registry on your computer. (by execute regedit.exe at the command mode)



- 2) You can find the settings of POSBANK LineDisplay device at the installed location as below.

